



BEACHPORT[®]

LIQUID MINERALS

livestock supplements

CONCENTRATED SUPPLEMENTS FOR HEALTH, PERFORMANCE AND INCREASED PROFITABILITY



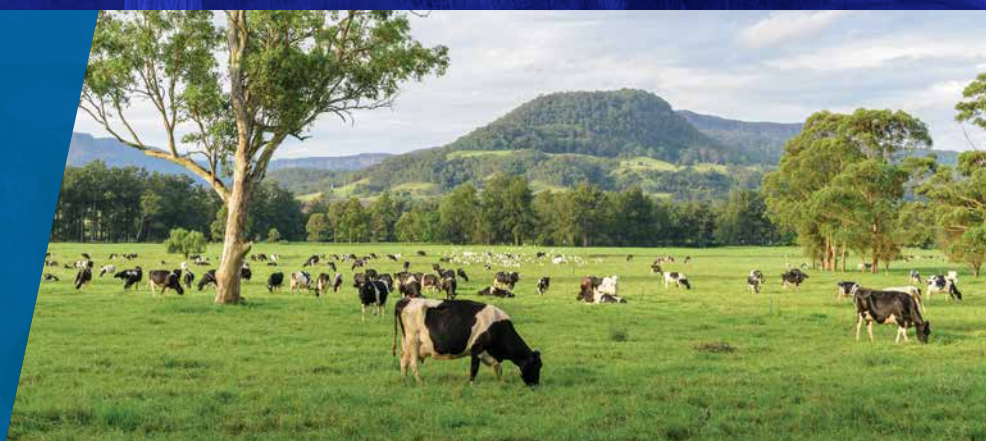
INNOVATIVE and POWERFUL
supplements containing
amino acids, trace elements
and natural electrolytes.



UNIQUE WATER APPLICATION
process which is superior,
cost-effective and easy
to use.



INCREASE PROFITABILITY
through improving the
health and performance of
your herd.



www.beachportliquidminerals.com.au
AUSTRALIAN OWNED AND MADE SINCE 2006

CONTENTS

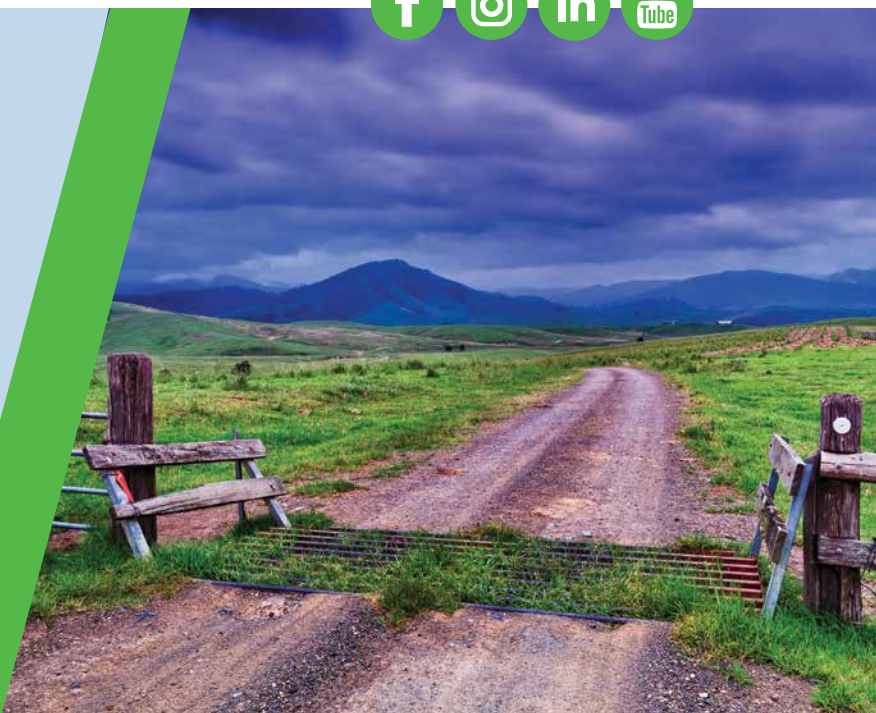
THE BEACHPORT DIFFERENCE	2.
UNIQUE FORMULATION	3.
> RUMEN PROTECTED FORMULA	3.
> AMINO ACIDS	3.
TRACE ELEMENTS	4.
ORGANIC ELECTROLYTES	5.
PRODUCT RANGE	
> BLUE CAP	6.
> WHITE CAP	7.
> GREEN CAP	8.
> YELLOW CAP	9.
> BLACK CAP	10.
> RED CAP	11.
ORGANIC RANGE AND QUALITY ASSURANCE	12.
DOSE RATES	13.
WATER APPLICATION	14.
BEACHPORT DISPENSER	15.
SCIENTIFIC DATA	16.



OUR MISSION

At Beachport Liquid Minerals, our mission is to transform the livestock industry with sustainable, easy-to-use nutritional solutions that enhance animal welfare, performance, and profitability. We provide innovative, concentrated supplements that seamlessly integrate with your enterprise, saving time and improving livestock health and efficiency.

Committed to empowering Australian producers, we offer expert advice and loyal support to ensure livestock thrive and operations succeed.



THE BEACHPORT DIFFERENCE

The key to sustainable & profitable livestock management

Sustainability and animal welfare are core to Beachport Liquid Minerals' values while enhancing your enterprise's profitability. Our supplementation system improves feed conversion, trace element levels, stress, conception rates, and wool quality in sheep, providing year-round support and addressing key health risks. This simple, effective method also reduces the industry's carbon footprint, saving time, money, and boosting production.

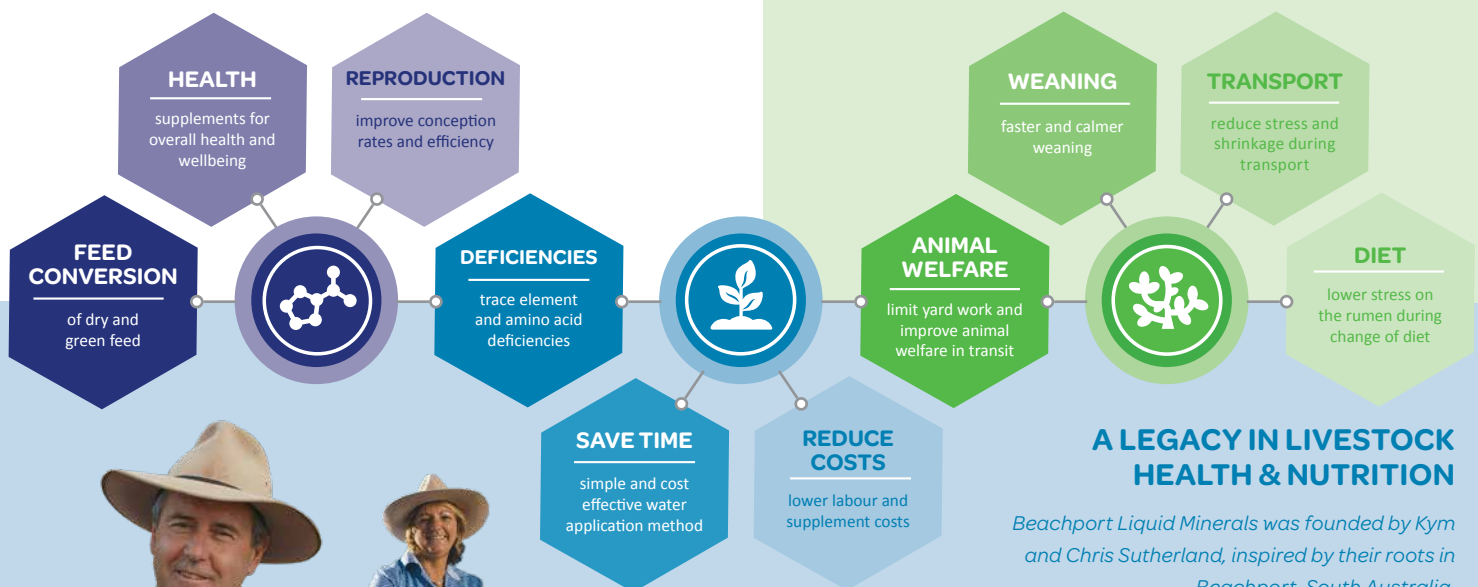


BENEFITS FOR PRODUCERS

- ✓ **Saves time and money** with our cost-effective Beachport Dispenser, requiring just a 3-day water trough application, with one dose lasting up to 6 weeks. It reduces transport, labour, and animal stress.
- ✓ **Flexible application:** if water application isn't possible, it can also be mixed with feed.
- ✓ **Reduces costs** through lower labour demands and reduced supplement usage, no need for yarding or injections.
- ✓ **Simple dosing:** easy-to-calculate dosage based on the number of animals and product required.
- ✓ **Supports sustainability** and promotes environmental responsibility and animal welfare.
- ✓ **Increases profitability** by lowering costs and improving production outcomes.
- ✓ **Facilitates calmer and faster weaning**, reducing stress for both livestock and handlers.
- ✓ **Simplifies animal handling** by eliminating yarding, keeping livestock calmer and easier to manage.

BENEFITS FOR LIVESTOCK

- ✓ **Enhances feed conversion** for both dry and green feed.
- ✓ **Aids trace element deficiencies** with a blend of up to 10 chelated trace elements and 15 amino acids.
- ✓ **Offers nutritional benefits** by strengthening the immune system via easily accessible nutrients to the blood stream, thus reducing susceptibility to parasites and disease in stress times.
- ✓ **Boosts pregnancy rates** and helps increase newborn survival rates.
- ✓ **Supports animals during critical stages** like joining, pregnancy, calving/lambing, weaning and lactation.
- ✓ **Compliments and aids the rumen** during dietary changes.
- ✓ **Minimises transport stress**, reducing shrinkage and helping animals return to feed more quickly after transit.
- ✓ **Lowers stress during feedlot transitions**, improving animal adaptation.
- ✓ **Promotes overall animal health and productivity**, leading to better outcomes.



Kym's passion for livestock nutrition began with the benefits of feeding kelp to livestock, sparking his curiosity about sea plants' role in animal health. With over 50 years of hands-on experience managing properties and addressing trace element deficiencies, Kym's expertise in breeding, genetic assessment, and nutrition research drives the company's commitment to a more sustainable and profitable livestock industry.

UNIQUE FORMULATION

Amino acids, trace elements and natural electrolytes

All Beachport Liquid Minerals products are made up of a unique blend, including the well documented nutritional values of kelps and sea grasses (naturally sourced amino acids). Fulvic acid (a natural electrolyte) is included, which makes the blend bio-active and bio-available. Each Beachport product contains varying amounts of chelated trace elements suitable for improving the health and productivity of your livestock.

RUMEN
protected

RUMEN PROTECTED FORMULA

Livestock, especially ruminants, require a number of essential trace elements and amino acids in order to achieve optimal performance. Amino acids are critical in creating a healthy, high performing animal, as well as preventing weight loss, reduced production and disease. They are most commonly provided to the animal through dietary protein, which is a limiting nutrient in ruminants.

Ruminants need two types of digestible protein:

- **Rumen degradable protein:** RDP is broken down in the rumen by microbes to produce microbial crude protein (MCP), providing the animal with only moderate quality amino acids.
- **Undegraded dietary protein:** UDP however, is able to bypass microbial degradation in the rumen, allowing it to be directly utilised in the small intestine.

Together, MCP and UDP form metabolisable protein (MP), essential for growing ruminants with high nutrient demands.

Beachport Liquid Minerals products are specifically formulated to be rumen-protected, ensuring maximum absorption. We begin with simple amino acids derived from sea grass and bio-synthesize them into complex amino acids, which are then bonded with natural electrolytes from fulvic acid and chelated trace elements. Our chelating process eliminates antagonism between elements, safeguarding their integrity and preventing breakdown in water, the rumen, or the abomasum.

This process allows the minerals and amino acids to bypass the rumen and be absorbed directly into the bloodstream through the small intestine, much like an injection. Once in the bloodstream, the product breaks down into simple molecules and provides a sustained release of nutrients over a 3-to-6-week period. This slow, steady absorption prevents nutrient spikes and reduces the need for frequent supplementation, ultimately enhancing overall animal health and performance.

AMINO ACIDS

There are 10 essential amino acids and 10 known non-essential amino acids that are important for effective livestock production. The body does not produce essential amino acids naturally, so they need to be introduced.

All Beachport products contain 9 essential amino acids and 6 non-essential amino acids via seagrass and kelps which is the base of our range bringing nutritional and production benefits to your livestock.

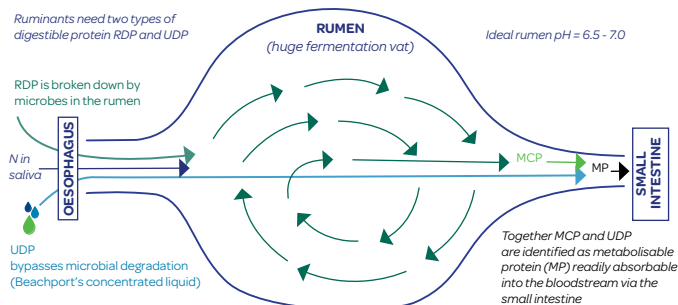
ESSENTIAL AMINO ACIDS

- ✓ **Leucine:** tissue repair, muscle mass, stress, growth, protein synthesis, bone, coat and blood haemoglobin.
- ✓ **Isoleucine:** nervous system, energy, muscle, endurance and blood haemoglobin.
- ✓ **Valine:** nervous system and glycogen production.
- ✓ **Lysine:** absorption and conservation of calcium, muscle development and immune system.
- ✓ **Methionine:** is a sulphur producing amino acid, promotes estrogen production and growth.
- ✓ **Phenylalanine:** nervous system (stimulates endorphin).
- ✓ **Threonine:** protein balance, immune system, nervous system, stress, bones and coat.
- ✓ **Histidine:** powerful nutrient, growth and blood health.
- ✓ **Arginine:** essential for nutrition.

NON-ESSENTIAL AMINO ACIDS

- ✓ **Alanine:** glucose-alanine cycle and urea cycle.
- ✓ **Aspartic Acid:** is a metabolite in the urea cycle.
- ✓ **Glutamic acid:** involved in cellular metabolism, breaks down dietary proteins into amino acids.
- ✓ **Glycine:** is considered a glycogenic acid, which means it helps supply the body with glucose needed for energy.
- ✓ **Proline:** for phosphorus, calcium absorption and essential for milk production.
- ✓ **Tyrosine:** synthesises proteins.

Beachport's system of incorporating these amino acids with the absorption and retention qualities of fulvic acid is key to how this product minimises the dependency on urea in lick and blocks.



TRACE ELEMENTS

Nutrition uniquely blended for better performance

Trace minerals must be provided to livestock in optimal concentrations during the growth and development of the animal, their production cycle and to improve their overall wellbeing. Supplemented livestock develop a higher resistance against diseases, reach optimal growth and have increased reproduction. The levels of trace elements in the Beachport range of supplements play an immense role in the health of livestock.



MAJOR ELEMENTS

Major elements are essential minerals that the body requires larger amounts of.

✓ **PHOSPHORUS:** works on metabolic pathways and physiological functions such as bone and joint health, helps with the way energy is used and distributed, with protein synthesis, the transport of fatty acids and amino acid exchange. It's also important for growth and cell differentiation, appetite control, efficient feed utilisation and fertility.

✓ **MAGNESIUM:** is linked closely to calcium and phosphorus. 70% of magnesium is found in the skeleton and the remainder is utilised in soft tissues and fluids. Magnesium plays a vital role in cellular respiration, cellular biochemistry and function, active transport system and the nervous system (improves temperament). Also helps with prevention against grass tetany (Hypomagnesaemia) and milk fever.

✓ **POTASSIUM:** works alongside sodium, chlorine and bicarbonate ions in osmotic regulation. It has an important role in the nervous system, muscle functions and carbohydrate metabolism.

✓ **SULPHUR:** assists in microbial digestion and protein synthesis as sulphur occurs in proteins which contain the amino acids methionine and cysteine.

TRACE ELEMENTS

Trace elements are essential minerals which are important to daily functions but are only required in small amounts.

✓ **COPPER:** is a component in proteins involved in blood which helps with blood health and growth.

✓ **COBALT:** is required by the microorganisms in the rumen for the synthesis of B12; also functions as an activating ion in enzyme reactions.

✓ **IODINE:** a very small amount is present in the body. Iodine is required in the synthesis of the hormones produced by the thyroid gland. From the synthesis of the hormones produced by the thyroid gland, iodine also plays a role in fertility, immune defence, digestion and muscle function.

✓ **MANGANESE:** is important as it acts as an activator of enzymes. It has been found to help with growth, skeletal development, fertility and reproduction. One of the first signs of deficiency is abnormalities in young calves and lambs and also in decreased conception rates.

✓ **ZINC:** is found in every tissue of the body. Important to animals as it aids in skin, wool, hair, hoof health and wound healing. Zinc is also involved in nucleic acid metabolism as well as immune system function and electrolyte balance.

✓ **SELENIUM:** is involved with Vitamin E in the immune system to protect against heavy metal toxicity. Selenium also assists in the production of the thyroid hormone, muscle development (white muscle disease), milk production, blood health and tissue health of young animals.

NOTE: It is important to keep in mind that the levels in Beachport Liquid Minerals products are sufficient for this type of supplement due to the increased absorption and retention abilities facilitated by the fulvic acid and kelp/seagrass extract.

Each product in the Beachport range is specifically formulated for different uses and will have different levels of trace elements depending on its intended use and application.



ORGANIC ELECTROLYTES

Powerful electrolytes for improved production

An important consideration in animal nutrition is the rate at which feed is degraded in the rumen. This was a key consideration in the development of an efficient and effective supplement. After understanding the science behind seagrass and including trace elements, fulvic acid was added to give us the unique chelated formulation we have today.

FULVIC ACID

Fulvic acid is one of nature's most powerful natural electrolytes and a naturally occurring chelating agent. It is completely soluble, has the ability to bond and dissolve minerals and nutritional elements and is capable of carrying 60 or more minerals and trace elements into cells.

Our proven method of chelation and the use of natural electrolytes allows the unique supplement to pass through the rumen undegraded for a more energy efficient and functional absorption directly into the bloodstream via the small intestine.

The lead scientist behind the fulvic acid that Beachport Liquid Minerals uses says "Fulvic acid is extracted from a plant derived natural process and is an exclusively Australian processed product which is certified organic by the National Association for Sustainable Agriculture Australia (NASAA). The fulvic acids are extracted using a unique process to maintain the integrity, stability and most importantly biology of the end product."

There has been sufficient research completed throughout the world to prove that fulvic acids have the ability to increase the absorption and retention of minerals and nutrients, both within plants and animals.

The properties of fulvic acid, which enable it to achieve the best results as animal supplements are:

- They are strong natural electrolytes and hence have high chelating and cation exchanging properties. This enables the fulvic acid to bind to the nutrients, enhancing the availability and absorption of nutrients within the animal rumen.*
- The low molecular weight and bio-transporting ability of fulvic acid helps to carry the held nutrients into the living cells. Once the nutrients blend into the fulvic acid complex, they become bio-active and bio-available.*
- Fulvic acid, because of its electrolytic properties, helps to restore the electrical balance that has been disturbed during stress periods."*

- Varsha Pushpakaran (B.Sc.)

PRODUCT RANGE >>

All Beachport Liquid Minerals supplements contain a combination of amino acids, natural electrolytes, major elements and trace elements but with altered formulations to suit different purposes of livestock production.



TRACE ELEMENTS PLUS

More than just a trace element supplement

Blue Cap combines amino acids, electrolytes and trace elements into a unique concentrated liquid supplement for cattle, sheep and goats. This mix of natural ingredients helps to combat essential mineral and amino acid deficiencies, along with having a range of production and health benefits, offering a cost-effective solution for year-round use. Blue Cap can make nutrients more absorbable and retainable, resulting in improved performance.

For best results it is administered via water using the Beachport Dispenser or mixed with feed. A single 3-day water dose remains effective in the animal's system for six weeks, eliminating the need for daily dosing.

AIDS IN

- ✓ Feed conversion of both dry and green feed
- ✓ Livestock better utilising fresh green feed
- ✓ Trace element deficiencies
- ✓ Supporting rumen development in young animals
- ✓ Improving fertility and survival rates
- ✓ Tightening up lambing periods with a more even drop
- ✓ Improving the health of poorer doing livestock
- ✓ Improving wool cut and tensile strength

ADDITIONAL BENEFITS

- ✓ High amino acid content (the building blocks of protein)
- ✓ Ease of application - once every six weeks
- ✓ Nil withholding period
- ✓ Three-year shelf life
- ✓ Less labour and cost as it's not a daily application



SCAN FOR DOSE RATE CALCULATOR
AND APPLICATION METHODS



AVAILABLE IN:
10L, 20L, 200L & 1000L

BLUECAP



KEY TIMES OF USE

We recommend that Blue Cap be dosed every **six weeks** for year-round benefit, for overall herd improvement and maintenance. If every six weeks isn't feasible in your operation, consider using over these key stress periods:

Pre-joining: Treat four weeks prior to putting the sires in.

Late pregnancy: Treat pre-calving/lambing. Start at least 12 weeks before calving/lambing for optimal results and continue after birthing. This will see the breeder through calving/lambing into lactation and help with recovery.

Sires: Treat three months prior to joining and continue regular dosing every 6 weeks for best results.

Feed conversion: For dry and green feed to maximise production.



CHADWICK DOWNS CATTLE CO
BRAFORDS & VIAMONTE BRANGUS HERDS
- MARTY LILL, Coonabarabran NSW

"When running AI and flush programs, we pre-treat all donors and recipes with Beachport BLUE CAP for better results. We are now getting more healthier embryos/eggs and higher conception rates all the time."

ACTIVE INGREDIENTS



15 AMINO ACIDS
via seagrass and kelp



ORGANIC NATURAL ELECTROLYTES
via fulvic acid



9 CHELATED TRACE ELEMENTS

- | | |
|-------------|-------------|
| ✓ Cobalt | ✓ Potassium |
| ✓ Copper | ✓ Selenium |
| ✓ Iodine | ✓ Sulphur |
| ✓ Magnesium | ✓ Zinc |
| ✓ Manganese | |

For more on
Blue Cap



YEAR-ROUND BENEFITS

For overall health in low phosphorus regions

White Cap has been specifically designed for phosphorus deficient areas. With the unique, concentrated formulation of trace elements, amino acids and electrolytes, White Cap is beneficial for year-round use for overall herd improvement and maintenance and is only dosed once every six weeks, saving time and money.

For best results use in the water supply, but White Cap can also be mixed with feed or poured on hay.

Beachport's unique liquid supplements pass through the rumen without being broken down to be absorbed via the small intestine into the animals' blood stream. From here it slowly releases in the blood stream similar to an injection over a six week period reducing labour and cost as it's not a daily application.

BENEFITS

- ✓ Aids in improving feed conversion of dry and green feed
- ✓ Helps livestock to better utilise fresh green feed
- ✓ Aids in trace element deficiencies
- ✓ Supports rumen development in young animals
- ✓ Aids in improving fertility and survival rates
- ✓ Helps tightening up calving/lambing periods with a more even drop
- ✓ Helps the health of poorer doing livestock
- ✓ Aids in improved wool cut and tensile strength

ADDITIONAL BENEFITS

- ✓ High amino acid content (the building blocks of protein)
- ✓ Ease of application - once every six weeks
- ✓ Nil withholding period
- ✓ Three-year shelf life



IVANHOE
STIRLING FEARON - Tambo, QLD

"In the first year of using WHITE CAP we halved the amount of dry season lick that we would normally put out and the following years in those areas we didn't use any other supplement other than Beachport. Not only was it a monetary saving in loose lick but the cattle visibly held their condition better, conception rates improved and mortality rates decreased."



AVAILABLE IN:
10L, 20L, 200L or 1000L

WHITECAP



KEY TIMES OF USE

We recommend that White Cap be dosed every **six weeks** for year-round benefit, for overall herd improvement and maintenance. If every six weeks isn't feasible in your operation, consider using over these key stress periods:

Pre-joining: Treat four weeks prior to putting the sires in.

Late pregnancy: Treat pre-calving/lambing. Start at least 12 weeks before calving/lambing for optimal results and continue after birthing. This will see the breeder through calving/lambing into lactation and help with recovery.

Sires: Treat three months prior to joining and continue regular dosing every 6 weeks for best results.

Feed conversion: For dry and green feed to maximise production.



SURBITON STATION
SEAN DILLON - Alpha, QLD

"We were stunned at the results. No paddock recorded less than a 20% improvement on the historical average for that paddock/mob, with every paddock exceeding previous conception records. One paddock of joiner Brahman heifers recorded a massive 94.5% conception rate."

ACTIVE INGREDIENTS



15 AMINO ACIDS
via seagrass and kelp



ORGANIC NATURAL ELECTROLYTES
via fulvic acid



10 CHELATED TRACE ELEMENTS

- | | |
|-------------|--------------|
| ✓ Cobalt | ✓ Phosphorus |
| ✓ Copper | ✓ Potassium |
| ✓ Iodine | ✓ Selenium |
| ✓ Magnesium | ✓ Sulphur |
| ✓ Manganese | ✓ Zinc |



For more on
White Cap



LOWER STRESS NATURALLY

Calm livestock for weaning, transport and feedlots

Green Cap is aimed at naturally calming livestock to improve ways of coping with stress during weaning, introduction and exit from feedlots, and with the unfamiliar surrounds of yarding and transportation in both short and long haul trips.

Different from other Beachport products, Green Cap is dosed at key times rather than every six weeks, but also includes the benefits of our blend of trace elements, amino acids and electrolytes.

GREENCAP



TRANSPORTATION BENEFITS

- ✓ Natural formulation aids in lowering stress levels. A calmer animal travels better.
- ✓ Decrease shrinkage during transportation.
- ✓ Animals remain hydrated during travel and helps retain moisture for better travel conditions.
- ✓ Application flexibility – for best results use in water supply but can be mixed with feed.
- ✓ Aids in reducing dark cutters and improving MSA grading.
- ✓ Aids with 'dead gut' with animals going back onto feed and water more efficiently.

WEANING BENEFITS

- ✓ Animals cope better with separation and are easier to handle when stress levels are lowered.
- ✓ Animals spend less time 'sulking' and return to feed and water sooner.
- ✓ Helps to reduce weaning time.

FEEDLOT BENEFITS

- ✓ Smoother induction.
- ✓ Animals go back onto feed faster with less downtime.
- ✓ Helps improve feed conversion and supports animals adapting to changes in feed.
- ✓ Exit from feedlot for carcass improvement.

KEY TIMES OF USE

Trucking: Ideal time is between one week to three days prior to trucking. Dosing within a 24hr period of travel will significantly reduce the chance of optimal result/benefits.

Weaning: Add to water either on entry to yards or weaning paddock. Can be dosed one week prior to weaning to also reduce stress on cow.

Feedlots: Add to water as soon as livestock enter yards.

Change in diet: Dose via water or onto feed when there is a major change in feed source.



EVERSLEIGH & WALLACE VALE
DROUGHTMASTERS - QLD
JENNY AND ROGER UNDERWOOD

"We always sell our weaner steers straight off mum to the saleyards and GREEN CAP plays a crucial role in this process to settle and then market our weaners. By the time they go to saleyards, they are completely settled and calm and the buyers really respond to the temperament and quality of the steers. Beachport is a fantastic product that consistently delivers results to our business".

ACTIVE INGREDIENTS



15 AMINO ACIDS
via seagrass and kelp



ORGANIC NATURAL ELECTROLYTES
via fulvic acid



9 CHELATED TRACE ELEMENTS

- | | |
|-------------|-------------|
| ✓ Cobalt | ✓ Potassium |
| ✓ Copper | ✓ Selenium |
| ✓ Iodine | ✓ Sulphur |
| ✓ Magnesium | ✓ Zinc |
| ✓ Manganese | |



AVAILABLE IN:
1L, 10L, 20L, 200L or 1000L



For more on
Green Cap



HIGH MAG FORMULA

Combat grass tetany - prevention is key

The **Yellow Cap** high magnesium product is specifically formulated to target increasing magnesium and amino acid levels in livestock to help combat grass tetany, milk fever, heavily pregnant females and improves overall muscle function.

Magnesium, combined with key amino acids, is important for all major muscles such as heart, rumen and uterus.

YELLOWCAP



photo supplied by Graham Reimers

BENEFITS

- ✓ Formulated to help combat sudden drops in magnesium levels in fresh green feed.
- ✓ Help combat high nitrate levels in fresh green feed.
- ✓ Aids in prevention of grass tetany and milk fever
- ✓ Nutritional dose pre calving or pre lambing, to benefit both mother and fetus.
- ✓ To strengthen and improve survivability of a newborn.
- ✓ Can be applied to hay or through the water supply.
- ✓ Dose every three weeks to ensure adequate magnesium levels in the blood stream.

Supporting nutritional demands in late pregnancy

With improved genetics in sheep improving fertility and the ability of goats and dorpers to have multiple off spring, this brings added nutritional pressure, not just to the mother but to the unborn offspring, especially multiples.

Goats have a very high nutritional requirement late in pregnancy because of multiple kidding and their natural ability to return to pregnancy quickly.

Goats also have a low tolerance to urea and a need for trace elements such as cobalt and magnesium.

Yellow Cap is having great success in the goat industry as well as benefits cattle and sheep.

Dosing Yellow Cap into the water supply for just three days provides the added advantage of not having to yard, meaning there is less stress and pressure on mothers in late pregnancy. The product aids the nutritional needs of the mother and helps the survivability of offspring.

Improved nutrition for the mother means more milk and less loss of weight. Mothers therefore return to pregnancy more successfully and the offspring (especially multiples) are stronger at birth and not left behind in growth rates.

KEY TIMES OF USE

Be proactive instead of reactive as prevention is better than needing a cure. Use Yellow Cap at key times when grass tetany and milk fever are traditionally prevalent. A full dose of Yellow Cap is beneficial to start with then use every three weeks to maintain magnesium levels at critical times, dosing at half the dose rate of other Beachport products.

Also beneficial for:

Pre-calving/lambing: Treat six weeks prior to lambing and calving and continue every three weeks until seasonal risk decreases.

Lactation: Dose every three weeks when grass tetany and milk fever are traditionally prevalent until seasonal risk decreases.

ACTIVE INGREDIENTS



15 AMINO ACIDS
via seagrass and kelp



ORGANIC NATURAL ELECTROLYTES
via fulvic acid



9 CHELATED TRACE ELEMENTS

- ✓ Cobalt
- ✓ Copper
- ✓ Iodine
- ✓ Magnesium
- ✓ Manganese
- ✓ Potassium
- ✓ Selenium
- ✓ Sulphur
- ✓ Zinc

AVAILABLE IN:
10L, 20L, 200L or 1000L



For more on
Yellow Cap



SELENIUM FREE FORMULA

Improve the performance of your sheep

Black Cap can be used if you are already using other products containing selenium.

It contains the unique Beachport combination of trace elements, amino acids, and electrolytes for improving performance. Along with the seagrass/kelp extract and electrolytes, it includes cobalt, copper, manganese, zinc, magnesium, potassium, sodium, sulphur and iodine.

For best results use Black Cap in the water supply with the Beachport Dispenser, but it can also be poured on hay or mixed with feed.

AIDS IN

- ✓ Feed conversion of both dry and green feed
- ✓ Livestock better utilising fresh green feed
- ✓ Trace element deficiencies
- ✓ Supporting rumen development in young animals
- ✓ Improving fertility and survival rates
- ✓ Tightening up lambing periods with a more even drop
- ✓ Improving the health of poorer doing livestock
- ✓ Improving wool cut and tensile strength

ADDITIONAL BENEFITS

- ✓ Includes essential trace elements for optimal wool production
- ✓ High amino acid content (the building blocks of protein)
- ✓ Ease of application
- ✓ Nil withholding period
- ✓ Three-year shelf life
- ✓ Less labour and cost as it's not a daily application



SCAN FOR DOSE RATE CALCULATOR
AND APPLICATION METHODS

BLACKCAP



KEY TIMES OF USE

We recommend that Black Cap be dosed every **six weeks** for year-round benefit, for overall herd improvement and maintenance. If every six weeks isn't feasible in your operation, consider using over these key stress periods:

Pre-joining: Treat four weeks prior to putting the sires in.

Late pregnancy: Treat pre-calving/lambing. Start at least 12 weeks before calving/lambing for optimal results and continue after birthing. This will see the breeder through calving/lambing into lactation and help with recovery.

Sires: Treat three months prior to joining and continue regular dosing every 6 weeks for best results.

Feed conversion: For dry and green feed to maximise production.



BRIMANNA POLL MERINO STUD
JAYDEN HARRIS - SA

"We have a mineral deficient property and we found the sheep are healthier, they seem to keep weight better and just generally do better. Because it's so easy to get into your stock it saves time. Beforehand we were using a product where it was a manual injection, instead you can put Black Cap in the water so it makes it a lot easier and they can come in and drink the water and they're getting those minerals. Saving time is a big thing in my business, that means more money in the bank"

ACTIVE INGREDIENTS



15 AMINO ACIDS
via seagrass and kelp



ORGANIC NATURAL ELECTROLYTES
via fulvic acid



8 CHELATED TRACE ELEMENTS

- ✓ Cobalt
- ✓ Copper
- ✓ Iodine
- ✓ Magnesium
- ✓ Manganese
- ✓ Potassium
- ✓ Sulphur
- ✓ Zinc

For more on
Black Cap



AVAILABLE IN:
10L, 20L & 200L



HORSE RECOVERY

Aid rehydration and recovery after work and stress

The **Red Cap** is formulated specifically to benefit horses after times of work or stress. With some slight adjustment to the Beachport formulation blend of trace elements, electrolytes and amino acids, Red Cap is designed for the equine industry to assist horses after strenuous exercise to bring them back up, to help with growing out young horses and also brood mares.

BENEFITS

- ✓ Key trace elements to aid in muscle protein, muscle strength and function, coat health and condition, growth rate, reproduction, lactation and also the immune system.
- ✓ Amino acids and electrolytes help a horse's recovery after strenuous exercise.
- ✓ Kelp / seagrass extract with over 90 different natural nutrients available for overall health.
- ✓ This product DOES NOT contain UREA.

KEY TIMES OF USE

- ✓ For horses not in work, Red Cap can be used year-round at two week intervals for health and condition.
- ✓ Directly after strenuous exercise for horses in work.
- ✓ For racehorses, do not use within two weeks prior to horses racing. Red Cap is designed for rehydration and recovery after strenuous work.



TAMBO, QLD

"I swear by Red Cap. I give 20mls every two weeks to all my horses after big days of mustering, campdraft or any type of work. It helps hydrate and put a spring back into their step not to mention a massive shine to their coat."

I also use it as a booster and pick me up if any of my horses may be feeling a little off. It's never let me or the horses down. Very affordable too."



**AVAILABLE IN:
1L & 5L**

REDCAP

DOSAGE VIA WATER TROUGH (preferred method)

For the best results we recommend application via the water supply. With most Beachport products we would usually recommend using the Beachport Dispenser but because you will be using smaller amounts for horses, it is best to pour straight into the water supply.

DOSE STEPS for multiple horses

- Work out how many horses on the water point and multiply by 20mls for mature horses, 10mls for younger and light horses.
- Split the total amount in half and dose in two applications over two days.
- Splitting the total dose ensures the product is evenly dosed.
- Repeat the above process every two weeks for a maintenance level.

DOSE STEPS for individual horse

- Dose amount: 20mls for mature horses, 10mls for younger and light horses.
- Pour dose directly into water supply.
- Repeat the above process every two weeks for a maintenance level.

Red Cap can also be added to feed.

ACTIVE INGREDIENTS



15 AMINO ACIDS
via seagrass and kelp



ORGANIC NATURAL ELECTROLYTES
via fulvic acid



9 CHELATED TRACE ELEMENTS

- ✓ Cobalt
- ✓ Copper
- ✓ Iodine
- ✓ Magnesium
- ✓ Manganese
- ✓ Potassium
- ✓ Selenium
- ✓ Sulphur
- ✓ Zinc



For more on
Red Cap



ORGANIC RANGE

Premium NASAA Certified Organic Range

Certified by the National Association for Sustainable Agriculture Australia (NASAA) and compliant with the U.S. Department of Agriculture's National Organic Program (USDA NOP). Beachport Liquid Minerals' Organic range includes Organic White Cap and Organic Green Cap. They are similar formulations to the traditional White Cap and Green Cap but made with organic compliant, premium ingredients.

premium
ORGANIC
product range

With little alterations to our core formulations, our green drum range means organic producers can enjoy the benefits that other producers have been achieving with Beachport since 2006

Look out for the green drum

The organic products come in 20L drums. 200L and 1000L are as per our traditional range but are clearly labelled organic.

Talk to our tech team

For information on our organic range please ask at your local stockist, or visit our website to discover the full benefits, dose rates and application guidelines.



**ORGANIC
WHITE CAP**



**ORGANIC
GREEN CAP**

www.beachportliquidminerals.com.au

QUALITY ASSURANCE

Accredited testing on every batch

The Beachport team are focused on investing in our customers and pride ourselves on our stringent quality assurance including testing on all Beachport products including individual NATA accredited batch analysis, with the batch analysis and samples filed for later reference. Our livestock nutrition products are fine filtered and require certificates of purity on all ingredients used.

FEEDSAFE ACCREDITED //

Beachport has a long history of holding our quality assurance and manufacturing processes to the highest of standards. Being part of the Stock Feed Manufacturers Association of Australia and FeedSafe®, the quality assurance accreditation program for the Australian stock feed industry, reinforces our own stringent quality assurance standards.

CERTIFIED PASTUREFED //

All Beachport Liquid Minerals products have been approved under the Pasturefed Cattle Assurance System's (PCAS) Approved Supplements Scheme on the basis they do not contain: any form of antibiotic. This includes the use of; low-level (sub-therapeutic) or therapeutic level doses; sulphonamides, ionophores or coccidiostats; any form of grains and grain by products; including whole, ground, cracked, flaked or toasted.



DOSE RATES

A simple approach to dosage

Dose rates are simple and easy using the Beachport Dispenser in the water trough. Follow the table on the drum for dose amounts and it's as simple multiplying the number of stock by the dose rate.

Dose frequency is once every six weeks via the water or mixed with feed at the dose rates in the tables below.

CATTLE

BREEDER

A heifer you're trying to get in calf, a cow in calf, or a cow with calf at foot (to 200 kilograms) is classed as a breeder unit.

DOSE RATES:	Per Breeder unit
BLUE CAP	50mls per animal per 6 weeks.
BLACK CAP	50mls per animal per 6 weeks.
WHITE CAP	50mls per animal per 6 weeks.
GREEN CAP	50mls per animal (lasts 6 weeks) use at key times of stress
YELLOW CAP	25mls per animal per 3 weeks.

DRY CATTLE

Calculated on animal's weight. Dose per head is for six weeks. For Yellow Cap we half the dose and dose every three weeks.

DOSE RATES: Per head		Frequency
100 - 200 kgs	20mls	6 weeks
201 - 300 kgs	30mls	6 weeks
301 - 400 kgs	40mls	6 weeks
401kg plus	50mls	6 weeks

EXAMPLE: 100 weaners with different weights:

70 x 300kg (30mls) 2100mls

+ 30 x 400kg (40mls) 1200mls

= 3300 ml (3.3 ltrs) of White Cap for six weeks

DAIRY CALVES

For dairy calves (up to 100kgs): 5mls per head every two weeks mixed with milk or feed as per application instructions.

SHEEP

WHITE CAP, BLUE CAP AND BLACK CAP

Age	Dose Volume (mls)	Frequency
Lambs under 30kg	2.5 mls	6 weeks
Adult Sheep	10 mls	6 weeks

IMPORTANT: Beachport Liquid Minerals Black Cap is the preferred product if you are using other long lasting selenium products as this product excludes selenium. If you need the selenium content and are not using other products that contain selenium then use Blue Cap or White Cap.

HORSES (RED CAP)

To get best results for horses in work or stress:

- 20mls for mature horses after strenuous exercise.
- 20mls per horse, per two weeks (No more than 60mls per six weeks).
- 10mls for younger & lighter horses every two weeks. (No more than 30mls per six weeks.)

GREEN CAP

Green Cap is designed to be used at key times of stress. Dose amounts remain the same but frequency and dose times vary depending if using for weaning, for change of diet, transporting or using in a feedlot situation.

For example for transport: For best results use one week to three days prior to trucking (NO LESS than 24 hrs prior to transport).

For further guidance on how to use Green Cap, application methods and key times visit:

www.beachportliquidminerals.com.au



WATER APPLICATION

Simple water medication is the key

Using water as a way of supplementing livestock will always be one of the most effective ways of delivery, as every animal has to drink.

The key reasons why Beachport's application system is so simple is because the company knew the problems that producers had endured with water medication in the past and set about solving these problems.



WHY WATER MEDICATION IN THE PAST WAS DONE DAILY >>

Due to traditional water supplements having a major urea component, great care had to be taken to prevent overdosing, as this had the potential to cause livestock deaths.

Also, traditional supplements were diluted in water, so calculations for volume and water quality had to be made before introducing the supplement into the water supply.

Traditionally, water medication had to be done through an inline system, which meant costly infrastructure and maintenance on water points. Although livestock producers understood the benefits of water medication, the cost of installation, maintenance and the risk of livestock deaths historically deterred the majority away from water medication.

BEACHPORT'S SOLUTION >>

- ✓ We removed the risks associated with urea by replacing this with naturally occurring amino acids that work in both dry and green feed.
- ✓ We made Beachport products rumen protected. This also means that our supplements do not dilute in water so calculations for water quality and volume are no longer required.
- ✓ Because our supplements are not degraded in the rumen, are rapidly absorbed into the bloodstream and broken down slowly over six weeks, daily dosing is not required.
- ✓ By not having to daily dose, we eliminated the need for inline pump infrastructure and the associated maintenance and labour costs with these systems.

THE BENEFITS >>

- ✓ **Reduce costs:** To install one inline system on one water point will cost well into the thousands. One Beachport Dispenser costs \$146 and can be moved to three water points in nine days.
- ✓ **Targeting option:** With the Beachport system individual mobs can be targeted at key times.
- ✓ **Less labor:** The Dispenser drum can be dropped into the water trough on a water run and retrieved on the next run, saving more costs.
- ✓ **No yarding:** Because Beachport works like an injection, livestock can be treated in late pregnancy in the paddock without the stress of yarding.
- ✓ **Simple maths:** The only calculation to be made is the number of stock to the amount of product. Water is simply the carrier, so water quality and volume do not need to be calculated.

FAQ's >>

How do you know every animal is getting their fair dose?

The amount of water that an animal will consume varies based on their weight, age and stage of life. By using our Dispenser, it is dosed slowly over a three day period, allowing enough time for every animal to get their required dose for six weeks.

How does the product not dissolve in water?

We coat all our ingredients in a unique chelating process which allows for our supplements to stay suspended in the water and not dissolve. This process enables our products to move with the flow of water, which ensures livestock are getting their dose when they drink.

Does water quality affect the product?

The liquid formulation is designed to stay suspended in water and not dissolve, therefore the water quality does not affect our products. However, it is recommended that your water quality is adequate from an animal welfare perspective as this will encourage them to drink.



BEACHPORT DISPENSER

Water medication made easy and effective

The stainless steel Beachport Dispenser is engineered for efficient delivery of fine-sieved Beachport Liquid Minerals, metering the product over 48 to 72 hours (depending on temperature) to ensure all animals at the water point have access. It easily screws onto a 5L, 10L, or 20L Empty Dispenser Drum. Operating on air and water pressure, the dispenser allows water to replace the product in the drum during the dosing period. For optimal distribution, ensure the drum moves freely in the trough.



WATCH VIDEO



6 SIMPLE STEPS TO USE THE BEACHPORT DISPENSER



1.

Gather your supplies:

- Measuring jug
- Beachport Dispenser
- Empty Dispenser Drum
- Beachport Liquid Minerals product



2.

Determine the dose:

Calculate the required dose using the livestock numbers and refer to the dosage rates on the drum or our online calculator. Measure the amount with the jug.



3.

Prepare the Dispenser Drum:

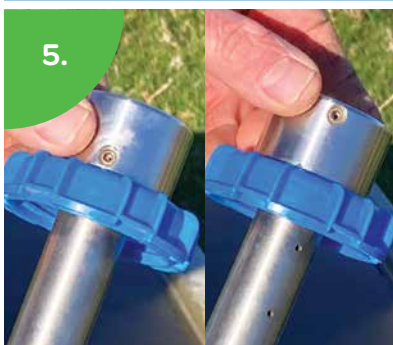
- Pour the measured product into the empty dispenser drum.
- Leave at least 20% of the drum's capacity for air pressure. For example: maximum 18L of liquid in a 20L drum or maximum 8L of liquid in 10L drum.
- Never fill the drum completely. You can add water to fill the drum up to 80% but leave 20% for air.



4.

Attached the Dispenser:

Securely screw the stainless steel dispenser onto the dispenser drum.



5.

Dispensing mechanism:

Ensure the grub screws on each side are functioning. These allow product to flow into the trough while water returns to the drum, adding weight for stability.



6.

Place and collect:

- Position the drum in the water system with the dispenser submerged.
- Return after 72 hours to collect the drum. Replaced water can be emptied back into the trough.
- If collection isn't possible within 72 hours, retrieve it during your next scheduled visit, ensuring it does not remain for extended periods to prevent clogging.

IMPORTANT: Never attach the Beachport Dispenser directly to a full drum of product. The drum must move freely in the trough to ensure proper product distribution. If using smaller volumes of Beachport product, consider adding extra water to the drum. This helps reduce excess air pressure, especially in warmer weather, which can cause low volumes to dispense too quickly.

Dispenser guidelines & maintenance



SCIENTIFIC DATA

Trial work at the University of Adelaide - Roseworthy

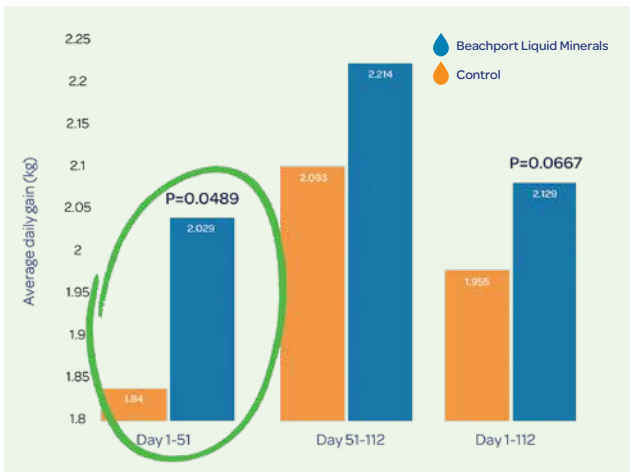
To support the results enjoyed by Beachport's clients since 2006 and our internal development trials, a study was conducted at the University of Adelaide's Roseworthy Campus. It comprised 80 steers, split into two groups, with 40 steers in a control group and 40 in a treatment group that received Green Cap before transport and Blue Cap throughout the trial. Blood tests were taken through the trial to test trace element levels and weights recorded to monitor weight gain.



WEIGHT GAIN >>

The average daily weight gain is shown here for the control group and treatment group at different stages of the trial.

The Beachport group had a higher average daily gain than the control group with Day 1 - 51 a significant weight gain result.



P<0.05 = significant difference

Average daily gain
for the BEACHPORT
group PER HEAD

1-51 DAYS

additional
189g
per day

MORE than the
control group

WHOLE TRIAL

additional
174g
per day

MORE than the
control group

COST BENEFITS >>

The value paid per carcass was ultimately \$95.64 more for Beachport Liquid Minerals group, compared to the control.

The cost per head for the trial with the Beachport supplements was \$4, meaning there was a profit of \$91.64 per head difference between the groups.

\$95.64
per head

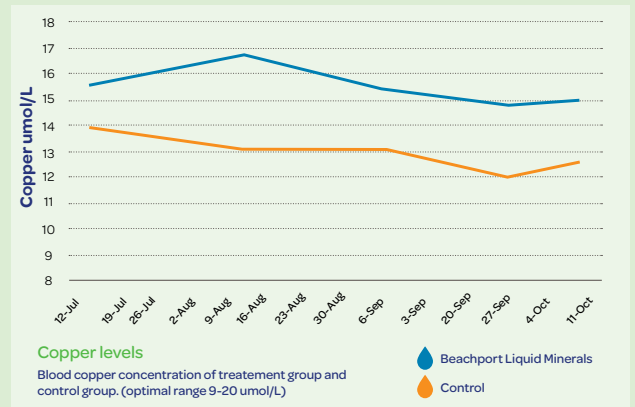
MORE than the
control group over
the whole trial

*pricing correct at time of trial

TRACE ELEMENTS >>

Bloods were taken to test for trace elements selenium, copper and magnesium throughout the trial showing higher levels for the Beachport group.

These results prove that minerals in Blue Cap are entering the bloodstream in safe levels.



Copper levels

Blood copper concentration of treatment group and control group. (optimal range 9-20 umol/L)

MAIN OUTCOMES >>

Supplementation via the water supply is just as effective as an injection.

Beachport Liquid Minerals water supplements are more cost effective and can produce an increased profit.

Amino acids and minerals are able to enter the bloodstream and are not degraded in the rumen or the abomasum.

All essential elements are maintained within the optimum levels required when supplemented with Beachport.

The exciting and indisputable results prove that Beachport is an effective supplement for not only trace element levels, but weight gain and profitability. Most importantly, the trial results prove the effectiveness of our water supply delivery method, which saves producers time and money, has significant animal welfare benefits and is more sustainable than traditional supplementation alternatives.

Full Trial
Summary
Report





ASK AT YOUR LOCAL RURAL MERCHANDISE SUPPLIER:

17th EDITION - February 2025

BEACHPORT CORPORATION PTY LTD

ADDRESS: PO Box 3578, Mount Gambier SA 5290 | PHONE: (08) 8725 4668

EMAIL: info@beachportliquidminerals.com.au | WEB: www.beachportliquidminerals.com.au

ABN 60 118 358 482