



**BEACHPORT**  
**LIQUID MINERALS**  
*livestock supplements*

*The simple solution  
to supplementing  
your livestock*



**IMPROVING SUSTAINABILITY  
AND PROFITABILITY OF THE  
LIVESTOCK INDUSTRY**

## CONTENTS

OUR VISION	2.
RUMEN PROTECTION	3.
3-IN-1 LIQUID FORMULATION	4.
TRACE ELEMENTS	5.
IMPROVED PRODUCTION - FULVIC ACID	6.
WATER APPLICATION	7.
DOSE RATES	8.
COST PER HEAD	9.
PRODUCT RANGE	
BLUE CAP AND BLACK CAP	10.
WHITE CAP	11.
GREEN CAP	12.
YELLOW CAP	13.
RED CAP	14.
ORGANIC RANGE AND QUALITY ASSURANCE	15.
BEACHPORT DISPENSER	16.



*Follow us on social media*

[www.facebook.com/BeachportLiquidMinerals](https://www.facebook.com/BeachportLiquidMinerals)  
[www.beachportliquidminerals.com.au](http://www.beachportliquidminerals.com.au)

© Beachport Corporation Pty Ltd 2022. All rights reserved.



### OUR MISSION //

To be known as a passionate company who genuinely cares about our livestock industry, with a reputation as the supplementation solution of choice for improving animal performance, health and wellbeing, saving time and money.



# OUR VISION

*Bringing sustainability and profitability together*



Since 2006, the quest for Beachport Liquid Minerals has been to bring sustainability and profitability together for the livestock industry. We do this by using natural and finite resources in a concentrated form, without waste, removing the reliance on daily supplementation while improving productivity in all facets of livestock production.

We are passionate and committed to taking supplementation to a new level not seen before in our industry. With animal welfare and the environment in mind, we are helping to improve the health and wellbeing of livestock with our rumen protectant formulation, to provide a more efficient and cost-effective way for ruminants to utilise important amino acids and trace elements, enabling absorption straight into the bloodstream without the use of an injection.

Our unique 3-in-1 liquid combination of amino acids, fulvic acid and trace elements target improved feed conversion, aid in trace element deficiencies, reduce animal stress, improve conception rates and wool quality in sheep, to name just a few benefits.

This is all achieved via a simple and effective supplementation system. Our innovative method

is reducing our industry's carbon footprint, saving livestock producers time and money while also improving production. It's a win for the industry - a complete circular economy.

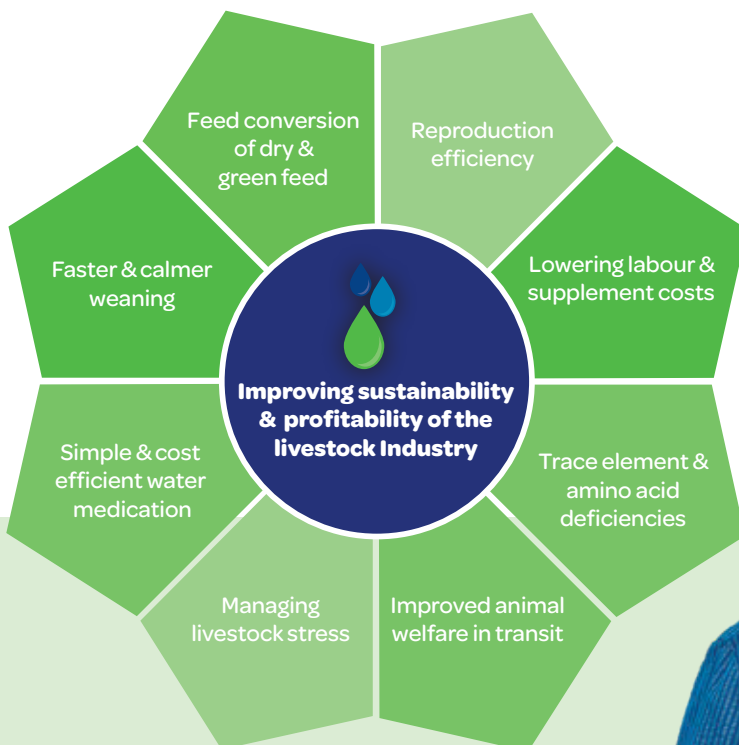
## **Made by Livestock Producers, for Livestock Producers //**

Our founders, Kym and Chris Sutherland, hail from Beachport in the South Australia's Limestone Coast region. This is also from where the company gets its name.

Raised on the land and seeing the benefits of kelp being fed to livestock, led to Kym's passion for the industry and curiosity into the beneficial role that sea plants can play in animal nutrition.

Kym's respected knowledge of livestock continues to be a large part of the company's success. For more than 50 years he has managed properties and contributed to natural breeding programs, classing, genetic assessment and animal nutrition research, while continuing the battle with trace element deficiencies on his own property, a problem he has faced most of his life.

Kym's balance of experience and technical knowledge, ongoing dedication to innovation and technologies with our partnering company, along with support from nutritionists, scientists and university studies, gives the company a greater understanding of livestock needs and how to achieve successful results for a profitable and more sustainable future.



# RUMEN PROTECTION

The key to improved performance and profitability

## RUMEN protected

Livestock, especially ruminants, require a number of essential trace elements and amino acids in order to achieve optimal performance. Amino acids are critical in creating a healthy, high performing animal, as well as preventing weight loss, reduced production and disease. They are most commonly provided to the animal through dietary protein, which is a limiting nutrient in ruminants.

Ruminants need two types of digestible protein - rumen degradable protein (RDP) and undegraded dietary protein (UDP).

RDP is broken down in the rumen by microbes to produce microbial crude protein (MCP), providing the animal with only moderate quality amino acids.

UDP however, is able to bypass microbial degradation in the rumen, allowing it to be directly utilised in the small intestine.

Together microbial crude protein and UDP are considered the true proteins absorbed in the small intestine and are identified as the metabolisable protein (MP). Growing ruminants have a high MP requirement in order to have efficient growth rates. Amino acids are considered the building blocks of proteins which are required for optimal growth, reproduction, lactation and maintenance.

There are 10 amino acids which are deemed essential to ruminants, with methionine, lysine and threonine identified

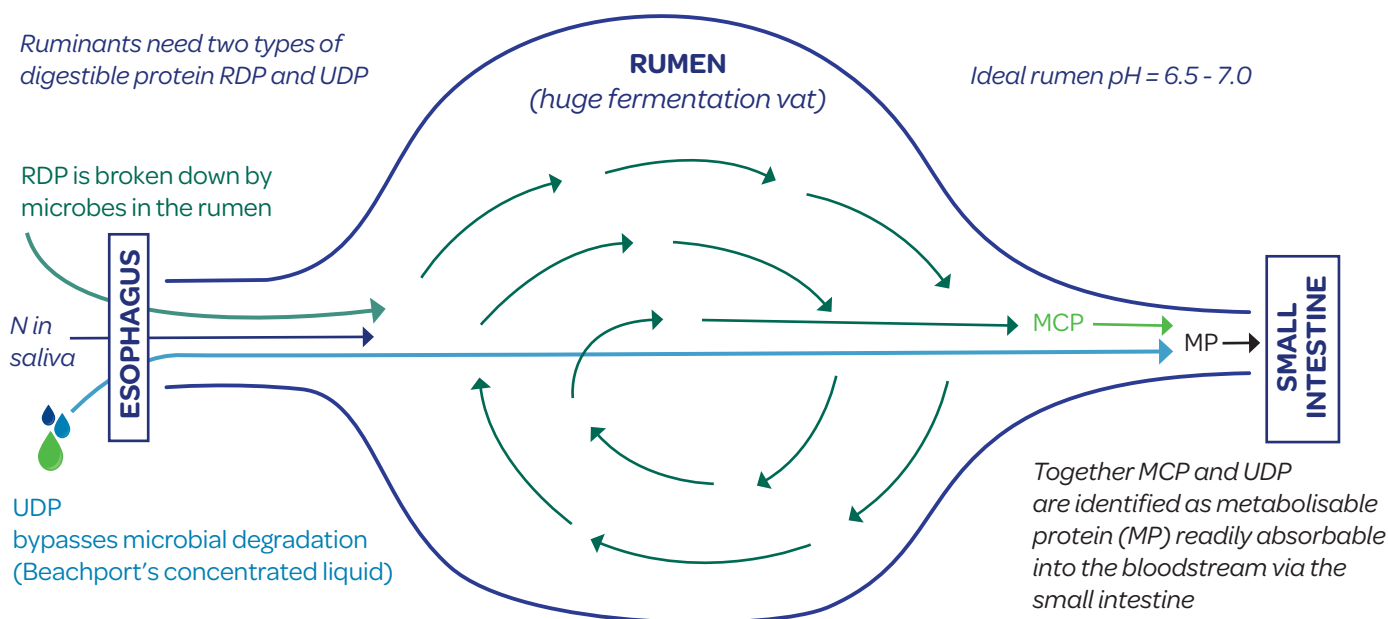
as the first limiting amino acids in beef cattle. Microbes in the rumen are known to metabolise amino acids such as lysine and methionine. This means that by the time the metabolised by-product passes from the rumen to the intestine, the amino acid is gone and of no benefit to the animal.

Therefore, it is important to develop techniques to protect amino acids, so they are able to act more like UDP and bypass rumen degradation, yet still be capable of absorption when they pass from the rumen into the intestine.

Beachport Liquid Minerals have developed a technique to create a rumen protected product which enables their concentrated products to be protected from degradation in the rumen. This allows the Beachport products to pass through the rumen into the intestines enabling absorption of essential amino acids and trace elements straight into the bloodstream of livestock.

Another benefit of the Beachport products is that although the concentrate is absorbed as a complex amino acid, it will be broken down into single amino acids with the essential trace elements bound to them. This process means the product takes about six weeks to fully break down in the bloodstream, removing the need for more frequent supplementation.

- Written by Chandler Coker BSc Animal Science and Sophie Tamblyn BSc (Hons) Animal Science



# 3-IN-1 LIQUID FORMULATION



All Beachport Liquid Minerals products are made up of a unique chelated blend including the well documented nutritional values of kelps and sea grasses (naturally sourced amino acids). They all include fulvic acid (a natural electrolyte) which makes the blend bio-active and bio-available. Each Beachport product also includes varying amounts of chelated major and trace elements suitable for improving the health and productivity of your livestock.

## AMINO ACIDS //

There are 10 essential amino acids and 10 known non-essential amino acids that are important for effective livestock production. The body does not produce essential amino acids naturally, so they need to be introduced. Non-essential amino acids can be made by the body through the synthesis of proteins.

We have always believed there to be a tie between how the essential and non-essential trace elements and amino acids function. This has now been scientifically proven.

For example, if the essential amino acid methionine is not available, sulphur cannot be fully utilised. Similarly, if proline is not available, calcium and phosphorus cannot be fully utilised.

When amino acids and trace elements are introduced to the rumen, they are compromised by the rumen bacteria. Traditionally, this has been a barrier for the successful use of amino acids with ruminants. It's been the difference between the lift in production between monogastrics and ruminants.

To maximise absorption of amino acids into the blood stream we take simple amino acids in our sea grass and biosynthesise into complex amino acids. Then aided by bonding with our natural electrolyte fulvic acid with chelated trace elements allows for the liquid concentrate to be rumen protected and rapidly absorbed into the blood stream. The blood slowly reverses this process returning the complex amino acids to simple amino acids while also slowly releasing the chelated trace elements, over a six-week period.

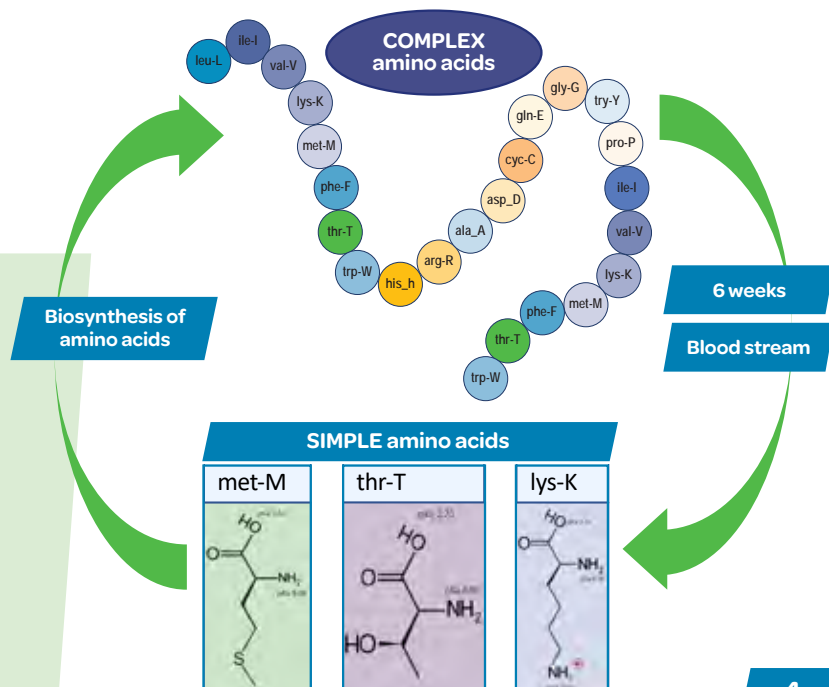
### Essential amino acids //

- Leucine: tissue repair, muscle mass, stress, growth, protein synthesis, bone, coat and blood haemoglobin.
- Isoleucine: nervous system, energy, muscle, endurance and blood haemoglobin.
- Valine: nervous system and glycogen production.
- Lysine: absorption and conservation of calcium, muscle development and immune system.
- Methionine: is a sulphur producing amino acid, promotes estrogen production and growth.
- Phenylalanine: nervous system (stimulates endorphin).
- Threonine: protein balance, immune system, nervous system, stress, bones and coat.
- Histidine: powerful nutrient, growth and blood health.
- Arginine: essential for nutrition.

### Non-essential amino acids //

- Alanine: glucose-alanine cycle and urea cycle.
- Aspartic Acid: is a metabolite in the urea cycle.
- Glutamic acid: involved in cellular metabolism, breaks down dietary proteins into amino acids.
- Glycine: is considered a glycogenic acid, which means it helps supply the body with glucose needed for energy.
- Proline: for phosphorus, calcium absorption and essential for milk production
- Tyrosine: synthesises proteins.

Beachport's system of incorporating these amino acids with the absorption and retention qualities of fulvic acid is key to how this product minimises the dependency on urea in lick and blocks.





# TRACE ELEMENTS

*Not just a trace element supplement*



## CHELATED ELEMENTS //

Included in Beachport products, the following elements play an immense role in the health of livestock. Levels will vary depending on the product and its use. Keep in mind that the levels are sufficient for this type of supplement due to the increased absorption and retention abilities facilitated by the fulvic acid and kelp/seagrass extract.

## MAJOR ELEMENTS //

Major elements are essential minerals that the body requires larger amounts of.

**Phosphorus:** works on metabolic pathways and physiological functions such as bone and joint health, helps with the way energy is used and distributed, with protein synthesis, the transport of fatty acids and amino acid exchange. It's also important for growth and cell differentiation, appetite control, efficient feed utilisation and fertility.

**Magnesium:** is linked closely to calcium and phosphorus. 70% of magnesium is found in the skeleton and the remainder is utilised in soft tissues and fluids. Magnesium plays a vital role in cellular respiration, cellular biochemistry and function, active transport system and the nervous system (improves temperament). Also helps with prevention against grass tetany (Hypomagnesaemia) and milk fever.

**Potassium:** works alongside sodium, chlorine and bicarbonate ions in osmotic regulation. It has an important role in the nervous system, muscle functions and carbohydrate metabolism.

**Sulphur:** assists in microbial digestion and protein synthesis as sulphur occurs in proteins which contain the amino acids cystine, cysteine and methionine.

## TRACE ELEMENTS //

Trace elements are essential minerals which are important to daily functions but are only required in small amounts.

**Copper:** a component in proteins involved in blood which helps with blood health and growth of the animal.

**Cobalt:** required by the microorganisms in the rumen for the synthesis of B12; also functions as an activating ion in enzyme reactions.

**Iodine:** a very small amount is present in the body. Iodine is required in the synthesis of the hormones produced by the thyroid gland. From the synthesis of the hormones produced by the thyroid gland, Iodine also plays a role in fertility, immune defence, digestion and muscle function.

**Manganese:** is important as it acts as an activator of enzymes. It has been found it helps with growth, skeletal development, fertility and reproduction. One of the first signs of deficiency is abnormalities in young calves and lambs, also in decreased conception rates.

**Zinc:** is found in every tissue in the animal's body. Important to animals as it aids in skin, wool, hair, hoof health and wound healing. Zinc is also involved in nucleic acid metabolism as well as the immune system and electrolyte balance.

**Selenium:** involved with Vitamin E in the immune system to protect against heavy metal toxicity. Selenium also assists in the production of the thyroid hormone, muscle development (white muscle disease), milk production, blood health and tissue health of young animals.



# IMPROVED PRODUCTION

With one of nature's most powerful electrolytes



## FULVIC ACID //

For Beachport it was one thing to have mastered the science behind seagrass concentrate, then adjust the formula to include trace elements, but the magic was still to come in the fulvic acid.

Fulvic acid is one of nature's most powerful natural electrolytes and a naturally occurring chelating agent. It stimulates the rumen, is completely soluble, has the ability to bond and dissolve minerals and nutritional elements and is capable of carrying 60 or more minerals and trace elements into cells.

An important consideration in animal nutrition is the rate at which feed is degraded in the rumen. This was a key consideration in us developing an efficient and effective supplement.

"Fulvic acid is extracted from a plant derived natural process and is an exclusively Australian processed product which is certified organic by the National Association For Sustainable Agriculture Australia (NASAA). The fulvic acids are extracted using a unique process to maintain the

integrity, stability and most importantly biology of the end product.

There has been sufficient research completed throughout the world to prove that fulvic acids have the ability to increase the absorption and retention of minerals and nutrients, both within plants and animals.

The properties of fulvic acid, which enable it to achieve the best results as animal supplements are:

- They are strong natural electrolytes and hence have high chelating and cation exchanging properties. This enables the fulvic acid to bind to the nutrients, enhancing the availability and absorption of nutrients within the animal rumen.
- The low molecular weight and bio-transporting ability of fulvic helps to carry the held nutrients into the living cells. Once the nutrients blend into the fulvic acid complex, they become bio-active and bio-available.
- Fulvic acid, because of its electrolytic properties, helps to restore the electrical balance that has been disturbed during stress periods."

- Varsha Pushpakaran (B.Sc.)

## UNIQUE CHELATED FORMULATION //

Chelation allows the unique supplement to pass through the rumen undegraded for a more energy efficient and functional absorption directly into the bloodstream via the small intestine.



SCAN FOR  
MORE ON INGREDIENTS &  
FORMULATION OR VISIT  
[www.beachportliquidminerals.com.au](http://www.beachportliquidminerals.com.au)



# WATER APPLICATION

*Simple water medication is the key*



## VIA THE WATER SUPPLY //

Using water as a way of supplementing livestock will always be one of the most effective ways of delivery, as every animal has to drink.

The key reasons why Beachport's application system is so simple is because the company knew the problems that producers had endured with water medication in the past and set about solving these problems.

## WHY WATER MEDICATION IN THE PAST WAS DONE DAILY //

Due to traditional water supplements having a major urea component, great care had to be taken to prevent overdosing, as this had the potential to cause livestock deaths.

Also, traditional supplements were diluted in water, so calculations for volume and water quality had to be made before introducing the supplement into the water supply.

Traditionally, water medication had to be done through an inline system, which meant costly infrastructure and maintenance on water points. Although livestock producers understood the benefits of water medication, the cost of installation, maintenance and the risk of livestock deaths historically deterred the majority away from water medication.

## BEACHPORT'S SOLUTION //

- We removed the risks associated with urea by replacing this with naturally occurring amino acids that work in both dry and green feed.

- We made Beachport products rumen protected. This also means that our supplement does not dilute in water so calculations for water quality and volume are no longer required.
- Because our supplements are not degraded in the rumen, are rapidly absorbed into the blood stream and broken down slowly over six weeks, constant dosing is not required.
- By not having to daily dose, we eliminated the need for inline pump infrastructure and the associated maintenance and labour costs with these systems.

## WHAT ARE THE BENEFITS OF THIS SIMPLE SYSTEM //

- **Reduce costs:** To install one inline system on one water point will cost well into the thousands. One Beachport dispenser costs \$143 and can be moved to three water points in nine days.
- **Targeting option:** With the Beachport system individual mobs can be targeted at key times.
- **Less labor:** The Dispenser drum can be dropped into the water trough on a water run and retrieved on the next run, saving more costs.
- **No yarding:** Because Beachport works like an injection, livestock can be treated in late pregnancy in the paddock without the stress of yarding.
- **Simple maths:** The only calculation to be made is the number of stock to the amount of product. Water is simply the carrier, so water quality and volume do not need to be calculated.



## DISPENSER GUIDELINES AND MAINTENANCE //

For more information on how to use the Dispenser, checklist and maintenance, scan the QR CODE above or visit: [www.beachportliquidminerals.com.au](http://www.beachportliquidminerals.com.au)





# DOSE RATES

A simple approach to dosage



## DOSE RATES - CATTLE //

### BREEDER //

A heifer you're trying to get in calf, a cow in calf, or a cow with calf at foot (to 200 kilograms) is classed as a breeder unit.

DOSE RATES:	Per Breeder unit
BLUE CAP	50mls per animal per 6 weeks.
BLACK CAP	50mls per animal per 6 weeks.
WHITE CAP	50mls per animal per 6 weeks.
GREEN CAP	50mls per animal (lasts 6 weeks) use at key times of stress
YELLOW CAP	25mls per animal per 3 weeks.

### DRY CATTLE //

Calculated on animal's weight. Dose per head is for six weeks and is NOT a daily dose for Blue Cap, Black Cap, White Cap.. For Yellow Cap we half the dose and dose every three weeks.

DOSE RATES: Per head		Frequency
100 - 200 kgs	20mls	6 weeks
201 - 300 kgs	30mls	6 weeks
301 - 400 kgs	40mls	6 weeks
401kg plus	50mls	6 weeks

EXAMPLE: 100 Weaners with different weights:  
70 x 300kg (30mls) 2100mls  
+ 30 x 400kg (40mls) 1200mls  
= 3300 ml (3.3 ltrs) of White Cap for six weeks

### DAIRY CALVES //

For dairy calves (up to 100kgs): 5mls per head every two weeks mixed with milk or feed as per application instructions.

## DOSE RATES - SHEEP //

WHITE CAP, BLUE CAP & BLACK CAP

Dose frequency is once every six weeks via the water or mixed with feed at the dose rates in the table below, or as directed by a Veterinary Surgeon.

Age	Dose Volume (mls)	Frequency
Lambs under 30kg	5mls	6 weeks
Adult Sheep	10mls	6 weeks

*IMPORTANT // Beachport Liquid Minerals Black Cap is the preferred product to use if you are using other long lasting selenium products as this range excludes selenium. If you need the selenium content and are not using other products that contain selenium then please use Blue Cap or White Cap.*

## DOSE RATES - GREEN CAP //

Green Cap is designed to be used at key times of stress. Dose amounts remain the same but frequency and dose times vary depending if using for weaning, for change of diet, transporting or using in a feedlot situation.

For example for transport: For best results use one week to three days prior to trucking (NO LESS than 24 hrs prior to transport).

For further guidance on how to use Green Cap, application methods and key times of use scan the QR code below.

## DOSE RATES - RED CAP (HORSES) //

To get best results for horses in work or stress:

- 20mls for mature horses after strenuous exercise.
- 20mls per horse, per two weeks (No more than 60mls per six weeks).
- 10mls for younger & lighter horses every two weeks. (No more than 30mls per six weeks.)

SCAN FOR  
DOSE RATE CALCULATOR  
AND APPLICATION METHODS OR VISIT  
[www.beachportliquidminerals.com.au](http://www.beachportliquidminerals.com.au)



# COST PER HEAD

One dose lasts 6 weeks



PRICES ARE BASED ON ADULT DOSES: CATTLE 50mls | SHEEP / GOATS 10mls | HORSES 20mls

Prices are based on RRP inc GST (correct at time of printing August 2022)

PRODUCT	DRUM SIZE	CATTLE		SHEEP / GOATS		HORSES	
		doses per drum	cost per 50ml dose	doses per drum	cost per 10ml dose	doses per drum	cost per 20ml dose
WHITE CAP	10L	200	\$1.43	1,000	\$0.29		
	20 L	400	\$1.17	2,000	\$0.23		
	200 L	4,000	\$1.04	20,000	\$0.21		
	1000 L	20,000	\$0.95	100,000	\$0.19		
GREEN CAP	1 L	20	\$3.58	100	\$0.72		
	10 L	200	\$1.49	1,000	\$0.30		
	20 L	400	\$1.21	2,000	\$0.24		
	200 L	4,000	\$1.09	20,000	\$0.22		
	1000 L	20,000	\$0.98	100,000	\$0.20		
BLUE CAP	10 L	200	\$1.32	1,000	\$0.26		
	20 L	400	\$1.13	2,000	\$0.23		
	200 L	4,000	\$1.02	20,000	\$0.20		
	1000 L	20,000	\$0.92	100,000	\$0.18		
BLACK CAP	10 L	200	\$1.26	1,000	\$0.25		
	20 L	400	\$1.10	2,000	\$0.22		
	200 L	4,000	\$0.98	20,000	\$0.20		
	1000 L	20,000	\$0.89	100,000	\$0.18		
YELLOW CAP	10 L	200	\$1.43	1,000	\$0.29		
	20 L	400	\$1.17	2,000	\$0.23		
	200 L	4,000	\$1.04	20,000	\$0.21		
	1000 L	20,000	\$0.95	100,000	\$0.19		
RED CAP	1 L					50	\$1.43
	5 L					250	\$0.75

## CALCULATE YOUR SUPPLEMENTATION COST //

\_\_\_\_\_ x \_\_\_\_\_ = \_\_\_\_\_ per 6 weeks  
 No. Head      Cost per dose

\_\_\_\_\_ x \_\_\_\_\_ x 8.66 = \_\_\_\_\_ per annum  
 No. Head      Cost per dose      No. of applications p.a.

SCAN FOR  
DOSE RATE CALCULATOR  
AND APPLICATION METHODS



NOTE: Green Cap is used at key stress times i.e. weaning and transportation. Red Cap for horses is every two weeks at an adult dose of 20mls and used as required.

# PRODUCT RANGE

Far from just trace element supplements



## BLUE CAP //



Blue Cap is Beachport Liquid Minerals' base range, formulated with a unique mix of amino acids, electrolytes and trace elements to help correct essential mineral and amino acid deficiencies, along with a range of production and health benefits for livestock. Dose rates are simple and application is easy via the water supply using our Beachport Dispenser. It can also be mixed with feed or poured on hay.

## BLACK CAP //



Black Cap has been formulated specifically for sheep if you are using other products that contain selenium as it is critical not to overdose on selenium. It is similar to our base product the Blue Cap, with selenium excluded.

### TARGET ANALYSIS (trace elements)

Amounts in mg/L	BLUE CAP	BLACK CAP
COBALT	3,000	3,000
COPPER	4,000	4,000
MANGANESE	5,400	5,400
ZINC	5,300	5,300
MAGNESIUM	2,800	2,800
SELENIUM	1,500	NIL
POTASSIUM	550	350
SODIUM	2,000	850
SULPHUR	16,000	15,000

The Blue Cap and Black Cap products also contains electrolytes (via fulvic acid) and amino acids (via kelp/seagrass extract)

SCAN FOR DOSE RATE CALCULATOR  
AND APPLICATION METHODS OR VISIT  
[www.beachportliquidminerals.com.au](http://www.beachportliquidminerals.com.au)



## BENEFITS //

There are many benefits of Blue Cap and Black Cap for overall health and production of your livestock which aid in:

- Feed conversion of dry and green feed
- Livestock better utilising fresh green feed
- Trace element deficiencies
- Supporting rumen development in young animals
- Improving fertility and survival rates
- Tightening up calving/lambing periods with a more even drop
- Improving the health of poorer doing livestock
- Improving wool cut and tensile strength

### Additional Benefits:

- High amino acid content (the building blocks of protein)
- Dose application is once every six weeks via water or mixed with feed
- Nil withholding period

## KEY TIMES OF USE //

We recommend that Blue Cap and Black Cap be dosed every six weeks for year-round benefit, for overall herd improvement and maintenance. If every six weeks isn't feasible in your operation, consider using over these key stress periods:

**Pre-Joining:** Treat four weeks prior to putting the sires in.

**Late Pregnancy:** Treat pre-calving/lambing. Start at least 12 weeks before calving/lambing for optimal results and continue after birthing. This will see the breeder through calving/lambing into lactation and help with recovery.

**Sires:** Start using six weeks prior to mating.

**Feed Conversion:** For dry and green feed to maximise production.



“ Chadwick Downs Cattle Co Brafords & Viamonte  
Brangus herds, Coonabarabran, NSW //

“When running AI and flush programs, we pre-treat all donors and recipes with Beachport BLUE CAP for better results. We are now getting more healthier embryos/eggs and higher conception rates all the time “

- MARTY LILL



# FOR YEAR-ROUND APPLICATION

with Beachport White Cap



## WHITE CAP //



White Cap has been specifically designed for phosphorus deficient areas. Its base formulation is the same as Blue Cap with added phosphorus to help correct phosphorus deficiencies. White Cap has all the benefits of Blue Cap and can be also used year-round every six weeks for overall herd improvement and maintenance.

### TARGET ANALYSIS (trace elements)

Amounts in mg/L	WHITE CAP
COBALT	3,000
COPPER	4,000
MANGANESE	5,400
ZINC	5,300
MAGNESIUM	2,800
SELENIUM	1,500
PHOSPHORUS	3,300
POTASSIUM	850
SODIUM	2,000
SULPHUR	16,000

White Cap also contains electrolytes (via fulvic acid) and amino acids (via kelp/seagrass extract)

## “ Surbiton Station, Alpha QLD //

*“We were stunned at the results. No paddock recorded less than a 20% improvement on the historical average for that paddock/mob, with every paddock exceeding previous conception records. One paddock of joiner Brahman heifers recorded a massive 94.5% conception rate.” - SEAN DILLON*

SCAN FOR DOSE RATE CALCULATOR AND APPLICATION METHODS OR VISIT [www.beachportliquidminerals.com.au](http://www.beachportliquidminerals.com.au)



## “ CLIENT SUCCESS - Ivanhoe, Tambo QLD //

*In the first year of using White Cap we halved the amount of dry season lick that we would've normally put out and the following years in those areas we didn't use any other supplement other than Beachport. Not only was it a monetary saving in loose lick but the cattle visibly held their condition better, conception rates improved and mortality rates decreased.*

- STIRLING FEARON

## BENEFITS //

- Aids in improving feed conversion of dry and green feed
- Helps livestock to better utilise fresh green feed
- Aids in trace element deficiencies
- Supports rumen development in young animals
- Aids in improving fertility and survival rates
- Helps tightening up calving/lambing periods with a more even drop
- Helps the health of poorer doing livestock
- Aids in improved wool cut and tensile strength

### Additional Benefits:

- High amino acid content (the building blocks of protein)
- Dose application is once every six weeks via water or mixed with feed
- Nil withholding period

## KEY TIMES OF USE //

We recommend that White Cap be dosed every six weeks for year-round benefit, for overall herd improvement and maintenance. If every six weeks isn't feasible in your operation, consider using over these key stress periods:

**Pre-Joining:** Treat four weeks prior to putting the sires in.

**Late Pregnancy:** Treat pre-calving/lambing. Start at least 12 weeks before calving/lambing for optimal results and continue after birthing. This will see the breeder through calving/lambing into lactation and help with recovery.

**Sires:** Start using six weeks prior to mating.

**Feed Conversion:** For dry and green feed to maximise production.



# LOWER STRESS NATURALLY

with Beachport Green Cap



## GREEN CAP //



Green Cap is specifically aimed at naturally calming livestock to improve ways of coping with stress during weaning, introduction and exit from feedlots, and unfamiliar surrounds of yarding and transportation in both short and long haul trips.

Different from our other products this is dosed at key times rather than every six weeks but also includes the benefits of the Beachport blend of trace elements, amino acids and electrolytes.

## TRANSPORTATION BENEFITS //

- Natural formulation aids to help lower stress levels. A calmer animal travels better.
- Decrease shrinkage during transportation.
- The animals don't 'empty out' on the truck as much.
- Application flexibility – for best results use in water supply but can be mixed with feed.
- Aids in reducing dark cutters and assist with improving MSA grading.
- Aids with 'dead gut' with animals going back onto feed and water more efficiently.
- Animals remain hydrated and retain moisture.

## WEANING BENEFITS //

- Animals cope better with separation and are easier to handle when stress levels are lowered.
- Animals spend less time 'sulking' and return to feed and water sooner.
- Helps reduce weaning time.

## FEEDLOT BENEFITS //

- Smoother induction.
- Animals go back onto feed and water faster with less downtime.
- Increases feed conversion and helps animals cope with change of feed.

## TARGET ANALYSIS (trace elements) //

Amounts in mg/L	GREEN CAP
COBALT	2,600
COPPER	1,500
MANGANESE	1,900
ZINC	2,500
MAGNESIUM	3,300
SELENIUM	1,500
POTASSIUM	200
SODIUM	2,000
SULPHUR	13,000

Green Cap also contains electrolytes (via fulvic acid) and amino acids (via kelp/seagrass extract).

## KEY TIMES OF USE //

**Trucking:** Ideal time is between one week to three days prior to trucking. DO NOT DOSE within 24hrs prior to trucking.

**Weaning:** Add to water either on entry to yards or weaning paddock. Can be dosed one week prior to weaning to also reduce stress on cow.

**Feedlots:** Add to water as soon as livestock enter yards.

**Change in diet:** Dose via water or onto feed when there is a major change in feed source.

## “ CLIENT SUCCESS - Eversleigh & Wallace Vale Droughtmasters //

*“We always sell our weaner steers straight off mum to the saleyards and GREEN CAP plays a crucial role in this process to settle and then market our weaners. By the time they go to saleyards, they are completely settled and calm and the buyers really respond to the temperament and quality of the steers. Beachport is a fantastic product that consistently delivers results to our business”.* - JENNY AND ROGER UNDERWOOD

## CERTIFIED ORGANIC GREEN CAP AVAILABLE //

Without compromise we have a certified Organic Green Cap available for organic producers. NASAA accredited and USDA NOP compliant, it is a similar formulation to the traditional Green Cap but made with organic compliant, premium ingredients.



# COMBAT GRASS TETANY

With Yellow Cap High Magnesium



## YELLOW CAP //



The Yellow Cap High Magnesium product is formulated using the Blue Cap as a base but specifically targets increasing magnesium and amino acid levels in livestock to help combat grass tetany, milk fever, heavily pregnant females and improves overall muscle function.

Magnesium, combined with key amino acids is important for all major muscles such as heart, rumen and uterus in ruminants.

## BENEFITS //

- Formulated to help combat sudden drops in magnesium levels in fresh green feed.
- Help combat high nitrate levels in fresh green feed.
- Aids in prevention of grass tetany and milk fever
- Nutritional dose pre calving or pre lambing, to benefit both mother and fetus.
- To strengthen and improve survivability of a newborn.
- Can be applied to hay or through the water supply.
- Dose every three weeks to ensure adequate magnesium levels in the blood stream.

## MAKING A DIFFERENCE TO NUTRITIONAL PRESSURE IN LATE PREGNANCY //

With improved genetics in sheep improving fertility and the ability of goats and dorpers to have multiple off spring, this brings added nutritional pressure, not just to the mother but to the unborn offspring, especially multiples.

Goats have a very high nutritional requirement late in pregnancy because of multiple kidding and their natural ability to return to pregnancy quickly.

Goats also have a low tolerance to urea and a need for trace elements such as cobalt and magnesium.

Therefore the Yellow Cap is showing great success in the goat industry as well as benefits for cattle and sheep.

Being able to dose Yellow Cap into the water supply for only three days gives the added advantage of not having to yard. This means less stress and pressure in late pregnancy, and aids the nutritional needs of the mother and helps the survivability of the newborn offspring.

Improved nutrition for the mother means more milk and less loss of weight, thus returning to pregnancy more successfully and the offspring's (especially multiples) are stronger at birth and are not left behind in growth rates.

## KEY TIMES OF USE //

Be proactive instead of reactive as prevention is the best cure. Use Yellow Cap at key times when grass tetany and milk fever are traditionally prevalent and dose at half the dose rates of other Beachport products to be used every three weeks so Magnesium levels do not drop at those critical times.

Also beneficial for these key times:

**Pre-calving/lambing:** Treat six weeks prior to lambing and calving

**Lactation:** Dose every three weeks.

Amounts in mg/L	YELLOW CAP
COBALT	3,000
COPPER	4,000
MANGANESE	5,400
ZINC	5,300
MAGNESIUM	3,600
SELENIUM	1,500
POTASSIUM	200
SODIUM	2,000
SULPHUR	16,000

## TARGET ANALYSIS (trace elements) //

Yellow Cap also contains electrolytes (via fulvic acid) and amino acids (via kelp/seagrass extract).





# RED CAP FOR HORSES

Improve your horses rehydration and recovery



## RED CAP //



The Red Cap is formulated specifically to benefit horses after times of work or stress. With some slight adjustment to the Beachport formulation blend of trace elements, electrolytes and amino acids this product is designed for the equine industry to assist horses after strenuous exercise to bring them back up, to help with growing out young horses and also brood mares.

## BENEFITS //

- Key trace elements to aid in muscle protein, muscle strength and function, coat health and condition, growth rate, reproduction, lactation and also the immune system.
- Amino acids and electrolytes in the Red Cap help a horse's recovery after strenuous exercise.
- Kelp / seagrass extract with over 90 different natural nutrients available for overall health of the horse.
- This product DOES NOT contain UREA.

## TARGET ANALYSIS (trace elements) //

Amounts in mg/L	RED CAP
COBALT	2,000
COPPER	4,000
MANGANESE	4,000
ZINC	5,300
MAGNESIUM	2,800
SELENIUM	1,000
POTASSIUM	550
SODIUM	1,500
SULPHUR	16,000

Red Cap also contains electrolytes (via fulvic acid) and amino acids (via kelp/seagrass extract).

## KEY TIMES OF USE //

- For horses not in work, Red Cap can be used year-round at two week intervals for health and condition.
- Directly after strenuous exercise for horses in work.
- For racehorses, do not use within two weeks prior to horses racing. Red Cap is designed for rehydration and recovery after strenuous work.

## DOSAGE VIA WATER TROUGH //

(Preferred method)

For the best results we recommend application via the water supply. With most Beachport products we would usually recommend using the BLM Dispenser but because you will be using smaller amounts for horses, it is best to pour straight into the water supply.

### DOSE STEPS for multiple horses

- Work out how many horses on the water point and multiply by 20mls for mature horses, 10mls for younger and light horses.
- Split the total amount in half and dose in two applications over two days.
- Splitting the total dose ensures the product is evenly dosed.
- Repeat the above process every two weeks for a maintenance level.

### DOSE STEPS for individual horse

- Dose amount: 20mls for mature horses, 10mls for younger and light horses.
- Pour dose directly into water supply.
- Repeat the above process every two weeks for a maintenance level.

Red Cap can also be added to feed.

For further information regarding dosage methods visit:  
[www.beachportliquidminerals.com.au](http://www.beachportliquidminerals.com.au)



## CLIENT SUCCESS - Benger WA //

"Horses here do well on the Red Cap. We have mares that have foaled in the last 2 weeks and have been on the Red Cap their whole pregnancies. Both mares are 18 years old and each has just produced their ninth foal. They've had little hard feeding leading up to their foaling, just basically what is in the paddock and supplemented with Beachport Liquid Minerals' Red Cap."

- CLEAR SKY PERFORMANCE HORSES.



# ORGANIC RANGE

Premium NASAA Certified Organic Range



## BEACHPORT ORGANIC PRODUCTS //

If you are an organic producer, looking to go organic or know someone who is, Beachport Liquid Minerals has a certified product range for organic livestock producers.

### NO COMPROMISE //

Certified by the the National Association for Sustainable Agriculture Australia (NASAA) and compliant with the U.S. Department of Agriculture's National Organic Program (USDA NOP). Beachport Liquid Minerals' Organic Range includes Organic White Cap and Organic Green Cap. They are similar formulations to the traditional White Cap and Green Cap but made with organic compliant, premium ingredients. With little alterations to the formulations, organic producers can achieve the benefits other producers have been experiencing with Beachport products since 2006.

### LOOK OUT FOR THE GREEN DRUM

The organic products come in green 20L drums. 200L and 1000L are as per our traditional range but are clearly labelled organic.

### FOR MORE INFORMATION

For information on our organic range please ask at your local stockist, or read about the organic products on our website to discover the full benefits, dose rates and application guidelines.



ORGANIC  
WHITE CAP



ORGANIC  
GREEN CAP

[www.beachportliquidminerals.com.au](http://www.beachportliquidminerals.com.au)

## QUALITY ASSURANCE //

ALL Beachport products undergo stringent quality assurance testing including individual NATA accredited batch analysis, with the batch analysis and samples filed for later reference. Our livestock nutrition products are fine filtered and require certificates of purity on all ingredients used.

## FEED SAFE ACCREDITED //

Beachport Liquid Minerals has a long history of holding our quality assurance and manufacturing processes to the highest of standards. Being part of the Stock Feed Manufacturers Association of Australia and FeedSafe®, the quality assurance accreditation program for the Australian stock feed industry, reinforces our own quality assurance standards.



USDA NOP compliant as a  
Livestock Health Care Product





# BEACHPORT DISPENSER

Water medication made easy



## BEACHPORT DISPENSER //

The stainless steel Beachport Dispenser is extremely robust and specially designed to allow the fine sieved Beachport Liquid Minerals to meter out over approximately 48 to 72 hours (depending on the temperature), allowing all animals on the water point to have access to the product. It simply screws onto a 5L, 10L or 20L empty dispenser drum. The dispenser works on air and water pressure so water replaces the product in the drum over the dosing period. Allow the drum to move freely in the trough, as movement is part of the distribution of product.

## IMPORTANT //

DO NOT screw Beachport Dispenser directly onto a full drum of product.

Allow the drum to move freely in the trough, as movement is part of the distribution of product.

You can add extra water in the drum if using low volumes of Beachport product. This will help to avoid too much air pressure in warmer weather, as it can force low volumes to dispense faster.



STEP 1

What you will need:

- 1 x measuring jug
- 1 x Beachport Dispenser
- 1 x Empty dispenser drum
- Beachport Liquid Minerals product



STEP 2

Calculate required dose amount for the livestock and pour into the measuring jug. Dose rates per head can be found on the back of the drum or you can use the dose rate calculator on our website.



STEP 3

Pour the calculated amount of product into the empty dispenser drum. Remember for the dispenser to work efficiently the drum needs to contain at least 2L space for air pressure. i.e. 20L drum with maximum 18L of liquid or 10L drum with maximum 8L liquid. You can add water to ensure volume is over 50%.



STEP 4

Screw the stainless steel dispenser into the dispenser drum.



STEP 5

The dispenser contains grub screws on each side, this allows the product to be dispensed into the trough and water to go back into the drum to act as a weight.



STEP 6



Place the drum into the water system with the dispenser in the water. Come back in 72 hours to collect. You can empty replaced water back into trough. If you can't collect in that time simply collect during your normal schedule, after the three day period.

Not recommended to leave for extended periods as the dispenser may get blocked.



## DISPENSER GUIDELINES AND MAINTENANCE //

For more information on how to use the Dispenser, checklist and maintenance, scan the QR CODE above or visit: [www.beachportliquidminerals.com.au](http://www.beachportliquidminerals.com.au)





ASK AT YOUR LOCAL RURAL MERCHANDISE SUPPLIER:

15th EDITION - August 2022

BEACHPORT CORPORATION PTY LTD

ADDRESS: PO Box 3578, Mount Gambier SA 5290 | PHONE: (08) 8725 4668 | FAX: (08) 8725 8574

EMAIL: [info@beachportliquidminerals.com.au](mailto:info@beachportliquidminerals.com.au) | WEB: [www.beachportliquidminerals.com.au](http://www.beachportliquidminerals.com.au)

ABN 60 118 358 482



**"CARING FOR THE BEST INDUSTRY IN AUSTRALIA" - Kym Sutherland**